

DRAWING NUMBER
26-236

DRAWING NUMBER

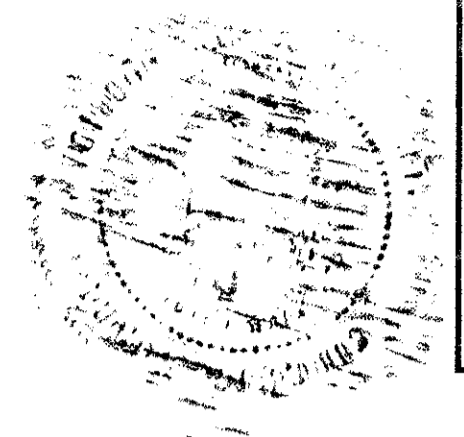
DRAWING NUMBER

DRAWING NUMBER

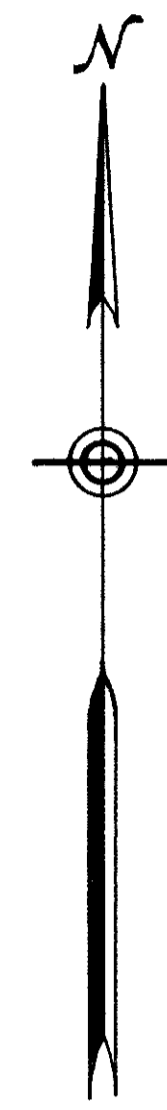
PLAT OF FRANWOOD PINES

IN NW 1/4 OF SECTION 13, TWP. 46 S., RGE. 42 E.
PALM BEACH COUNTY, FLORIDA

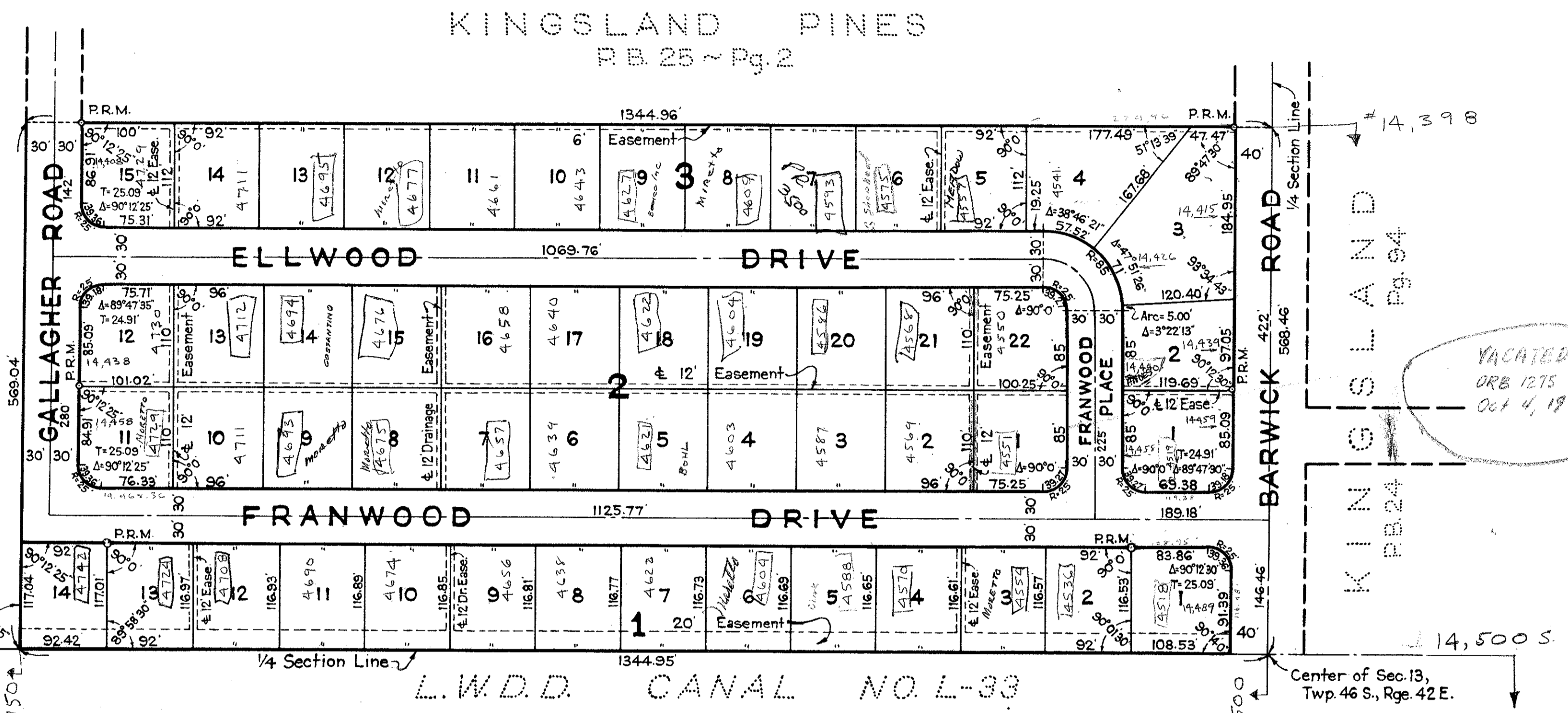
STATE OF FLORIDA
COUNTY OF PALM BEACH
This Plat was filed for record at 2:47 P.M.
this 12 day of April
1961, and duly recorded in Plat Book No.
26 on page 236.
J. ALEX ARNETTE, Clerk Circuit Court
By: *J. M. Blackman*, D. C.



TURNOUT REQUIRED



NOT
PLATTED



Approved: April 10, A. D. 1961
Board of County Commissioners

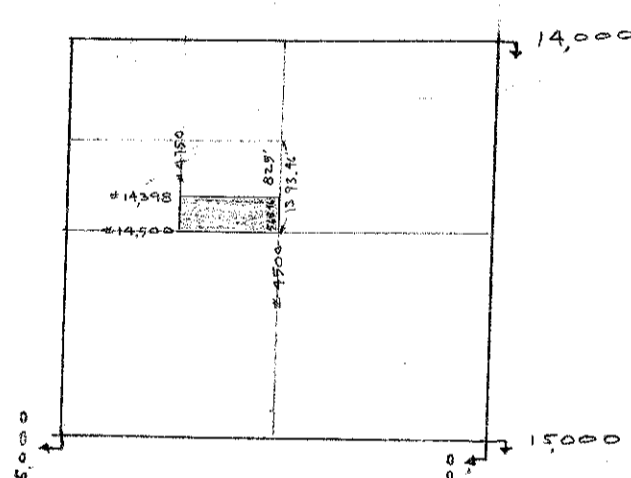
By: *Brew Bradley*
Chairman

By: *Stephen M. Smith*
County Engineer

VACATED
ORB 1275 P59
Oct 4, 1965

NOTE
Building Setback Lines shall be as required by
Palm Beach County Zoning Regulations.
There shall be no buildings or other structures
placed on Utility Easements.
There shall be no buildings or any kind of con-
struction or trees or shrubs placed on Drain-
age Easements.
Easements are for Public Utilities unless
otherwise noted.

N.S. = 5.577 / Ft.
E.W. = 5.328 / Ft.



STATE OF FLORIDA
COUNTY OF PALM BEACH ss
KNOW ALL MEN BY THESE PRESENTS, that FRANWOOD DEVELOPMENT COMPANY, a Florida Corporation, the owner of the tract of land lying and being in Section 13, Township 46 South, Range 42 East, Palm Beach County, Florida, shown hereon as FRANWOOD PINES, and more particularly described as follows, to wit:
The Southeast Quarter (SE 1/4) of the Northwest Quarter (NW 1/4), less the North 825 feet thereof, of Section 13, Township 46 South, Range 42 East, Palm Beach County, Florida.
has caused the same to be surveyed and platted as shown hereon, and does hereby dedicate to the perpetual use of the public, as public highways, the Drives and Roads shown hereon, and the use of the Easements for the construction and maintenance of Public Utilities and/or Drainage Purposes.
IN WITNESS WHEREOF, the said Corporation has caused these presents to be signed by its President and attested by its Secretary and its corporate seal to be affixed hereto, by and with the authority of its Board of Directors, this 7th day of February, A. D. 1961.

STATE OF FLORIDA
COUNTY OF PALM BEACH ss
I HEREBY CERTIFY that on this day personally appeared before me, an officer duly authorized to administer oaths and take acknowledgments, ELLWOOD J. SCHUMANN and DOROTHY C. SCHUMANN, President and Secretary, respectively, of FRANWOOD DEVELOPMENT COMPANY, a Florida Corporation, to me well known and known to me to be the individuals described in and who executed the foregoing dedication, and they acknowledged before me that they executed the same as such officers of said Corporation by and with the authority of its Board of Directors for the purposes therein expressed, and that their act and deed was the act and deed of said Corporation.
Witness my hand and official seal at West Palm Beach, County of Palm Beach and State of Florida, this 7th day of February, A. D. 1961.

STATE OF FLORIDA
COUNTY OF PALM BEACH ss
I HEREBY CERTIFY that the plat shown hereon is a true and correct representation of a survey, made under my direction, of the foregoing described property, and that said survey is accurate to the best of my knowledge and belief, and that permanent reference monuments (P.R.M.) have been placed as required by law.
Subscribed and sworn to before me this 10th day of February, A. D. 1961.

John J. Flowers
Notary Public

TURNOUT REQUIRED

Henry R. Brockway
Registered Land Surveyor
Florida Certificate No. 331

John J. Flowers
Notary Public

My Commission expires: August 7, 1961.

My Commission expires: August 7, 1961.

Attest:

By: *Dorothy C. Schumann*
Secretary

By: *E. Wood J. Schumann*
President

FRANWOOD DEVELOPMENT
COMPANY

1000-345

BROCKWAY, WEBER & BROCKWAY
ENGINEERS, INCORPORATED
WEST PALM BEACH, FLORIDA

13-4642
FRANWOOD PINES

FIELD: J. J. F. SCALE: 1" = 100' D.W. No.
OFFICE: J. J. F. DATE: FEB. 1961
DR. R. J. J. F.
BK. 26, P. 236

HC-126